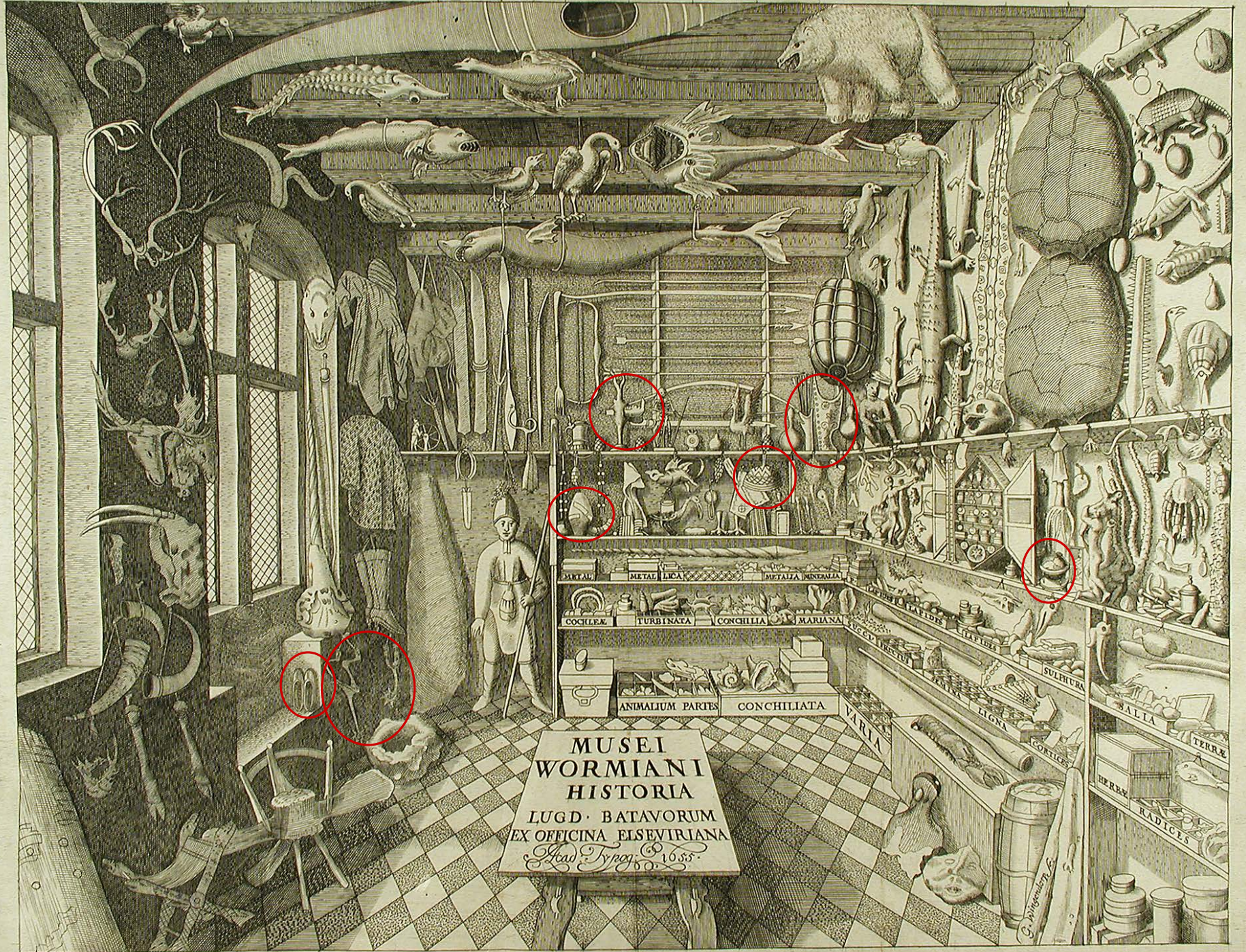


# Re-imagining the Museum through its History

Camilla Mordhorst, PhD  
Deputy Director, National Museum of Denmark







MUSEI  
WORMIANI  
HISTORIA  
LUGD. BATAVORUM  
EX OFFICINA ELSEVIRIANA  
*Leod. Typog. 1655.*

METALLA  
METALLA LACA  
METALLA MINERALIA  
COCHLEA  
TURBINATA  
CONCHILIA  
MARIANA  
ANIMALIUM PARTES  
CONCHILIATA

VARIA  
SULPHUR  
LIGNA  
GORTICES  
SALIA  
TERRA  
RADICES



MUSEI WORMIANI

# HISTORIÆ

DE

VEGETABILIBVS RARIORIBVS

LIBER SECUNDUS.

CAP. I.

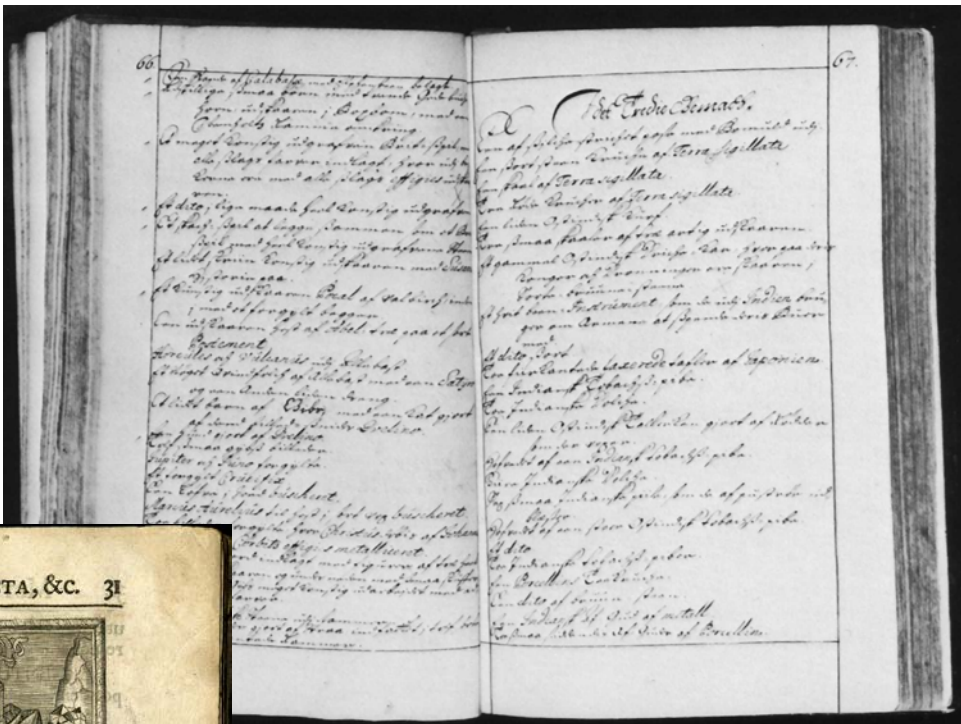
*Instituti rationem edocens.*

**E**XPEDITIS libro primo fossilibus, quibus jam gaudet Museum nostrum; ut pedem promoveamus ad ea quæ supra terram proveniunt, instituti nostri postulat ratio.

Inter ea verò offert Natura, scendens, quæ creare apta nat

Hic verò animæ de Vegetal gram eorum Fret inmensi, in Viri Clarissimi.

Museo tenemus, vel virides in Horto colimus



## SECT. VII. METALLA, LAPIDES & LAPIDEFACTA, &C. 31



### SECTIO VII. Metalla, Lapides & Lapidifac- ta, Terræ, Succî con- creti etc:



**MINERA AURI** ex tractu Cremnicen-  
si Ungaria.

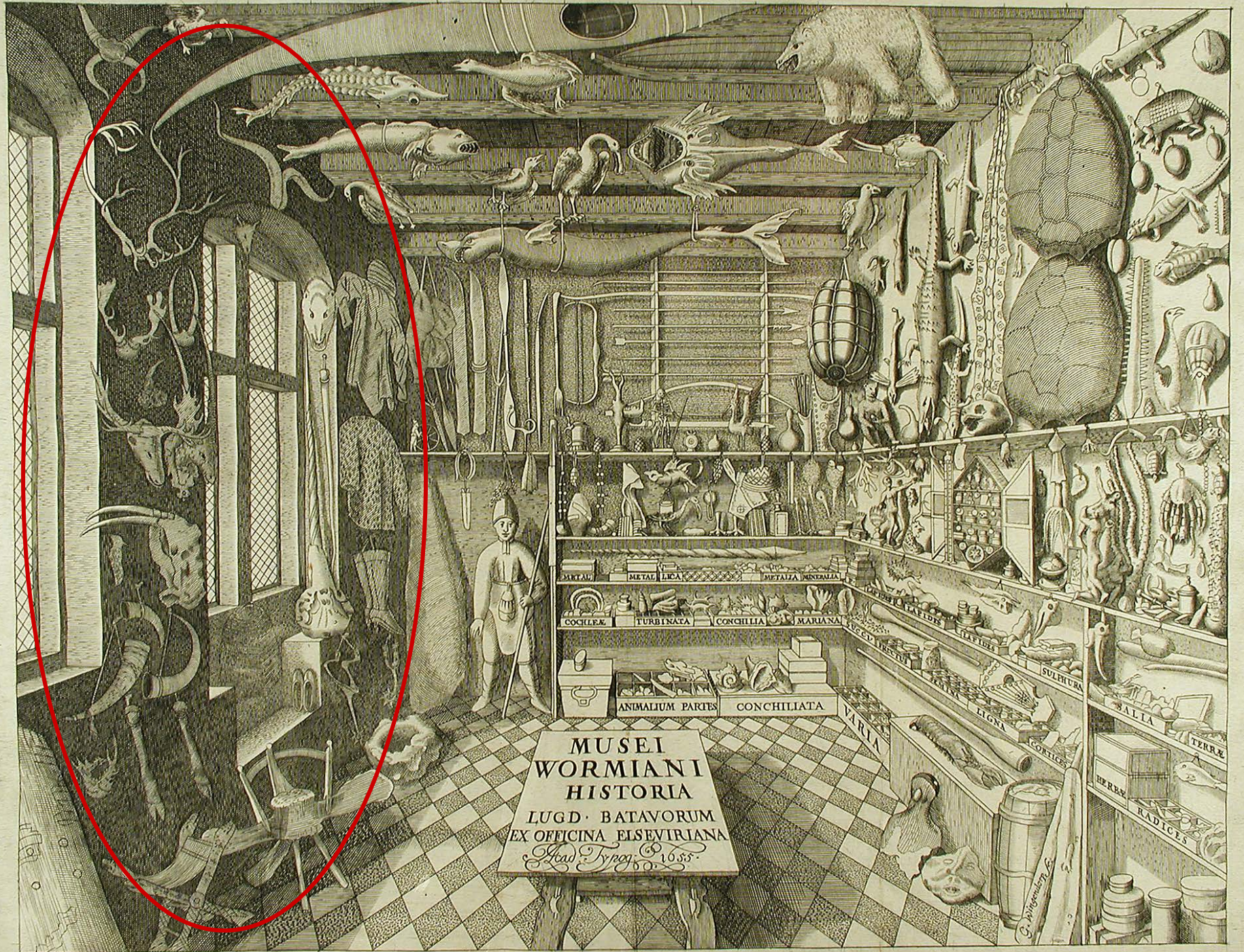
MINERÆ duæ AURI e fodinis Norvegiæ e-  
rutæ, quarum una intermixtam sibi materiam  
habet, quæ Quartzum metallurgis appellatur,  
altera pyritis speciem, quæ Stes vulgò dicitur.  
anno 1644 rei metallicæ in Norvegia Præfectus  
mineram quoq; auri in tractu Nenesensi prope  
portum Arendalensem invenit, nigram & tal-

cosam, referente Wormio.

AURUM ex fodinâ quadam, prope Regiomontum Norvegiæ allatum,  
anno 1687



A material with properties  
and potential medical  
effects.



MUSEI  
WORMIANI  
HISTORIA  
LUGD. BATAVORUM  
EX OFFICINA ELSEVIRIANA  
Leod. Typog. 1655.

METALLA  
METALLA LACA  
METALLA MINERALIA  
COCHLEA  
TURBINATA  
CONCHILIA  
MARIANA  
SULPHUR  
SALIA  
TERRA  
RADICES  
CORTICES  
FLORES  
FRUCTUS  
SEMINA  
VARIIS  
C. Willebrandt P.



MUSEI  
WORMIANI  
HISTORIA  
LUGD. BATAVORUM  
EX OFFICINA ELSEVIRIANA  
*Leid Typog. 1685.*

METALLICA  
METALLA MINERALIA  
COCHLEAE  
TURBINATA  
CONCHILIA  
MARIANA  
LUGD. BATAVORUM  
SULFURA  
LIGNA  
AGORTICES  
SALIA  
TERRÆ  
RADICES  
HERBÆ

ANIMALIUM PARTES  
CONCHILIATA

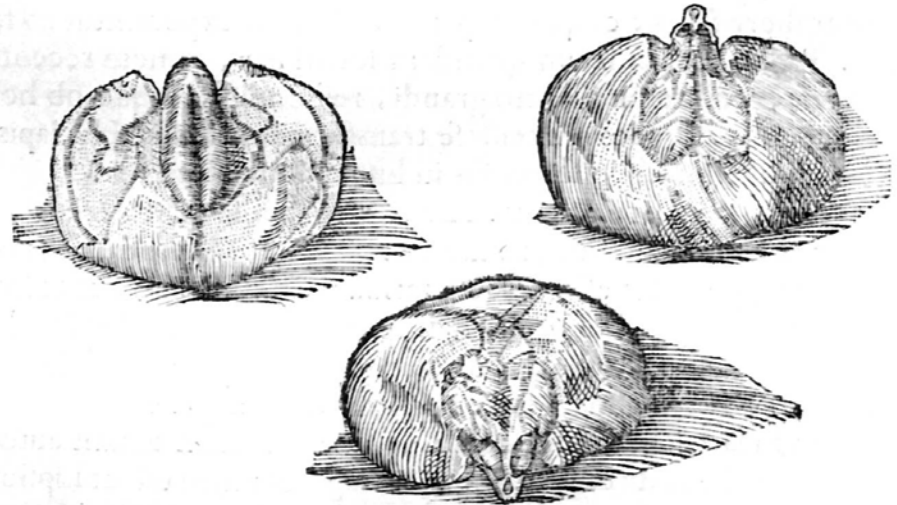
VARIA

*C. Pinxten delin. &c.*



"Nature plays in wonder with all the forms of the natural objects [...] there is hardly any animal which form cannot be found depicted".

*Museum Wormianum*, p. 81

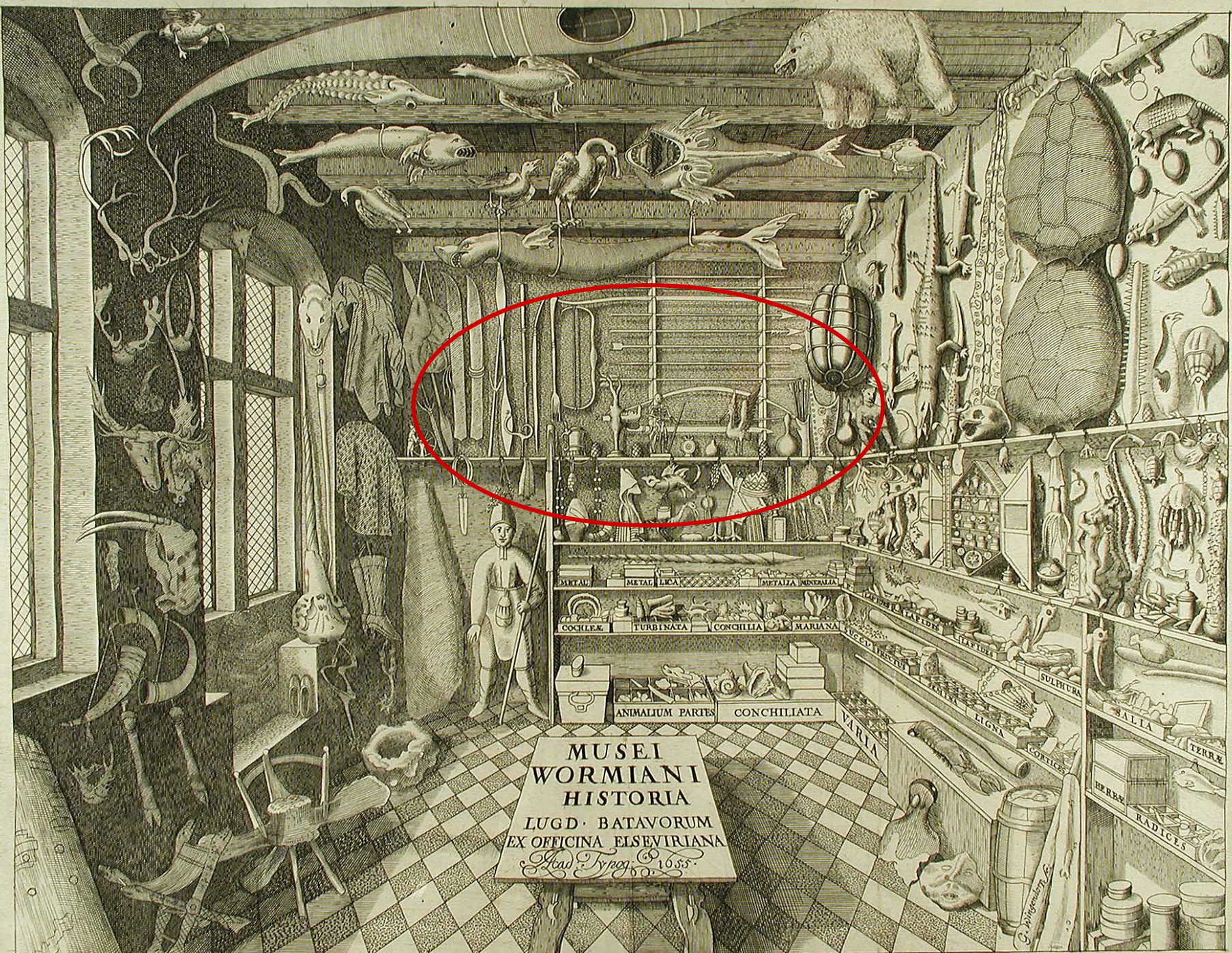






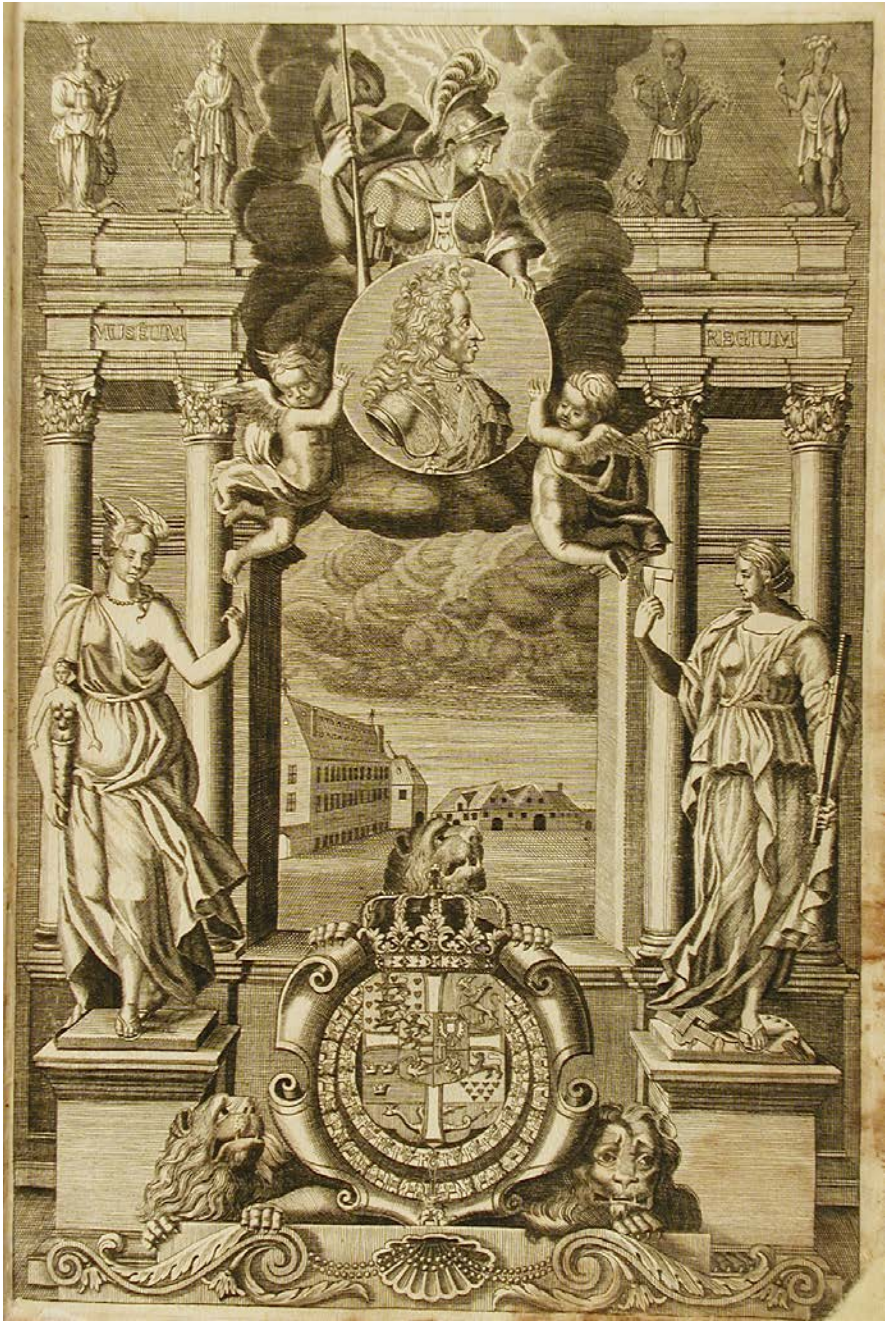
"A Brazilian hat or rather an African basket."

G. Seger: *Synopsis methodica rariorum tam naturalium quam artificialium, quæ Hafniæ servantur in Musæo Wormiij ...* 1653.

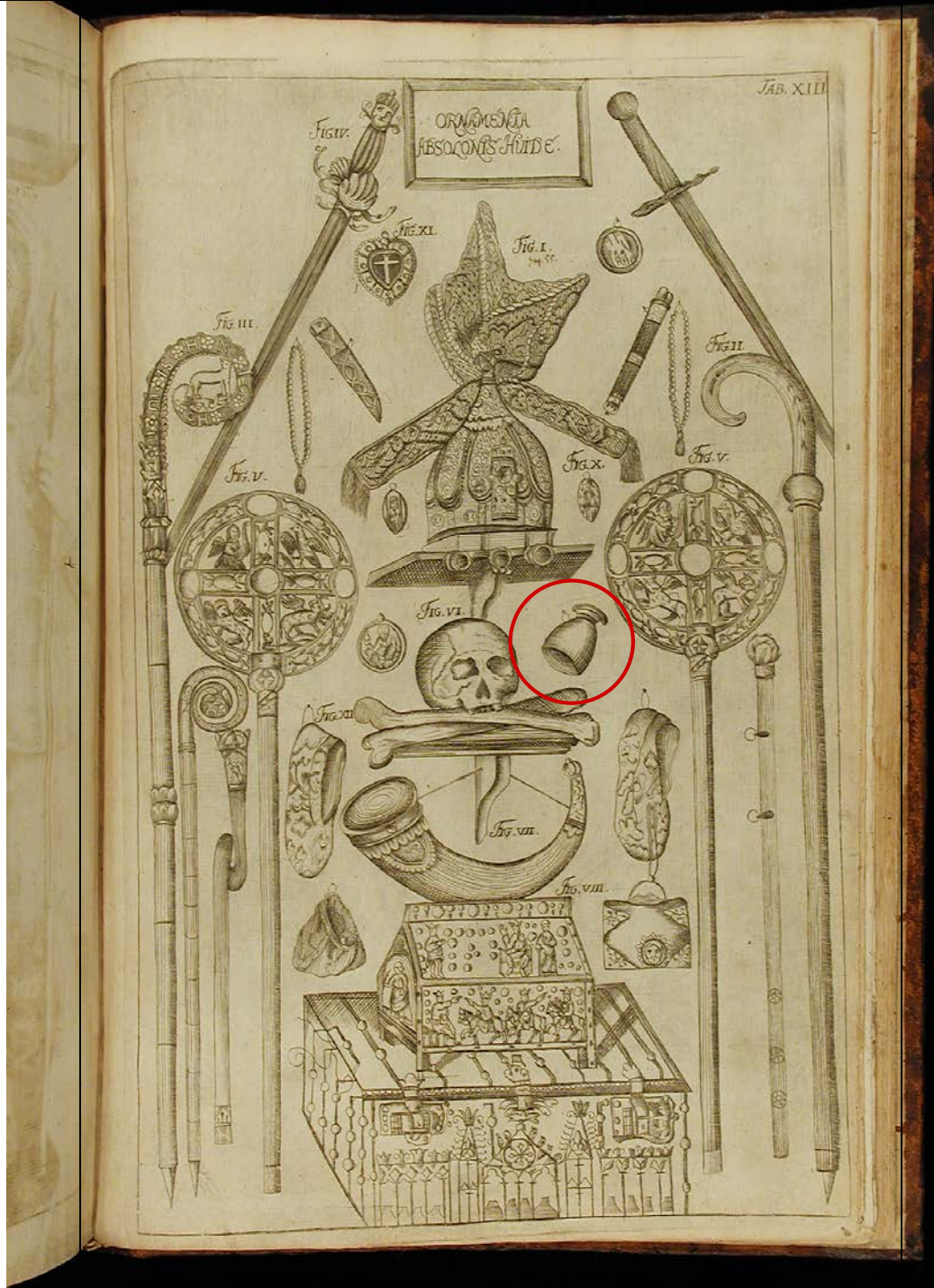


MUSEI  
WORMIANI  
HISTORIA  
LUGD· BATAVORUM  
EX OFFICINA ELSEVIRIANA  
*Leid Typog. 1685.*

METALLA METALLICA METALLA MINERALIA  
COCHLEAE TURBINATA CONCHILIA MARIANA  
LACERATA LAPIDES  
SULFURA  
ANIMALIUM PARTES CONCHILIATA  
VARIA  
LIGNA  
CORIACES  
SALIA  
TERRAE  
RADICES  
HERBAE



The Royal Kunstammer  
Frontispice from *Museum Regium* 1696.



Museum Regium  
1696.

TAB. XI.

FIG. I.



FIG. II.



Plate from *Museum Regium* 1696 showing the play of nature.









Department:  
Danish Middle Age and  
Renaissance

Category:  
"Drinking vessels of  
other materials"

Subcategory:  
"Ivory and rhinoceros  
horn, bezoar stones."





## A Foucauldian history of epistemes?

The Renaissance episteme	The Classical Episteme	The Modern Episteme
<b>Museum Wormianum</b> 1620-1650	<b>The Royal Kunstkammer</b> 1650-1820	<b>Antiquarian Nordic Museum</b> 1820 -
A study object.  A natural object.	A prestige object  A man-made object, a piece of art.	A source from the past (and to the past)  A historical object

# From presentations to representations

## Presentations

- The context of the object are of minor importance
- The unique, irregular, spectacular and abnormal are in focus.
- Unfinished investigations.
- Preparing for the future.

The museum object is crucial as an object of investigation.

## Representations

- The context of object are of crucial importance.
- The average and the common are in focus.
- Illustrate the established knowledge.
- Dealing with the past.

The museum object is exemplary, illustrative of a more important story.